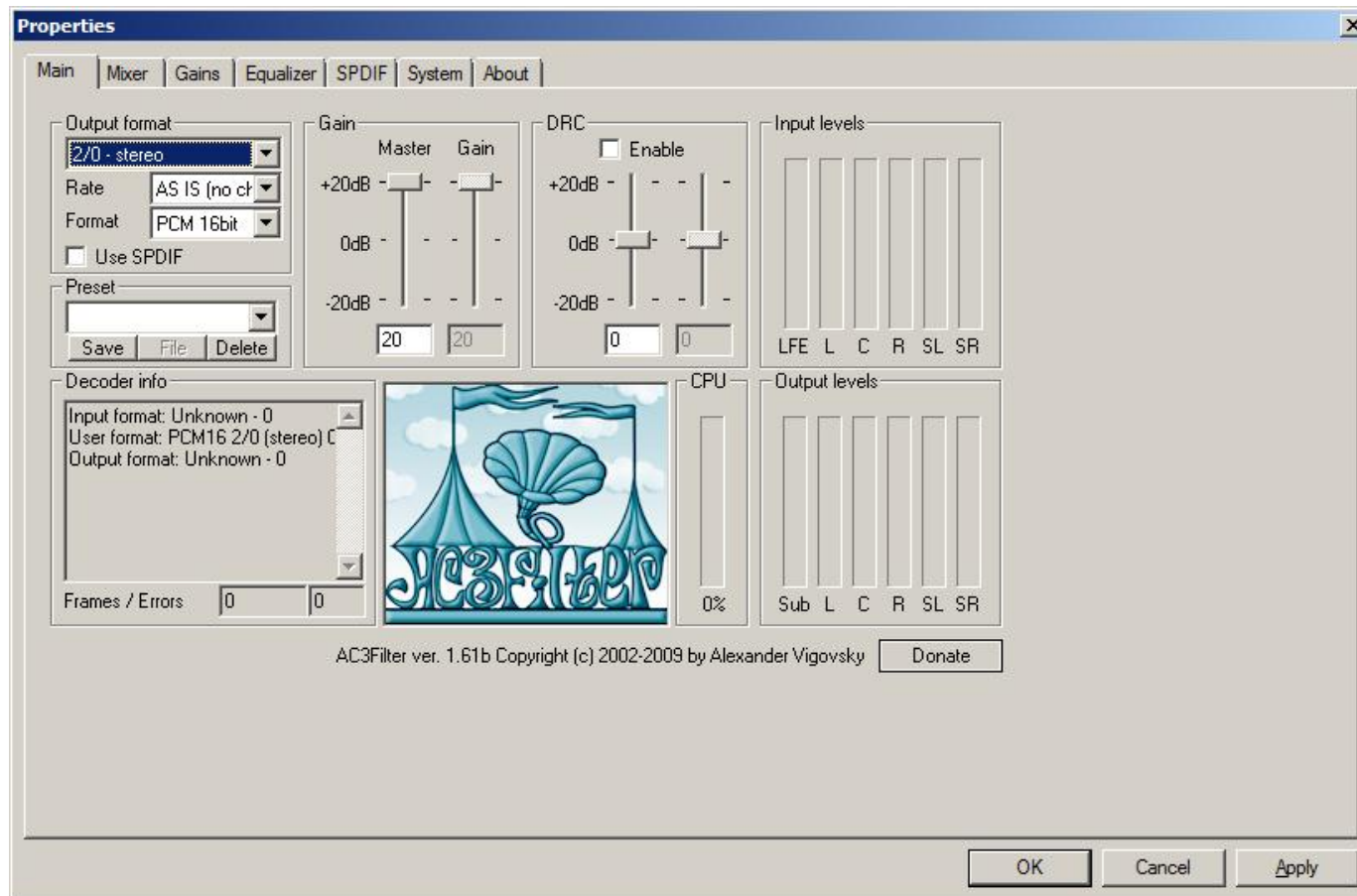


# AC3Filter

The following settings work for me

Main (change Master and Gain)



Mixer (change Voice, Surround, LFE)

**Properties**

Main Mixer Gains Equalizer SPDIF System About

**Gains**

Master Gain Voice Surround LFE

20 20 +20dB 0dB -20dB 20 -12.8 -13.4

**Output format**

2/0 - stereo  
PCM 16bit

**Matrix preset**

Save Delete

**Options**

☒ Auto gain control  
☐ One-pass norm  
☒ Auto matrix  
☐ Normalize matrix  
☒ Voice control  
☒ Expand stereo  
☐ Bass redirection  
120 Cutoff frequency

**Mixing matrix**

	L	C	R	SL	SR	LFE	
0.6145	0	0.3855	0	0	0	0	L'
0	0	0	0	0	0	0	C'
0.3855	0	0.6145	0	0	0	0	R'
0	0	0	0	0	0	0	SL'
0	0	0	0	0	0	0	SR'
0	0	0	0	0	0	0	Sub

**Input levels**

LFE L C R SL SR

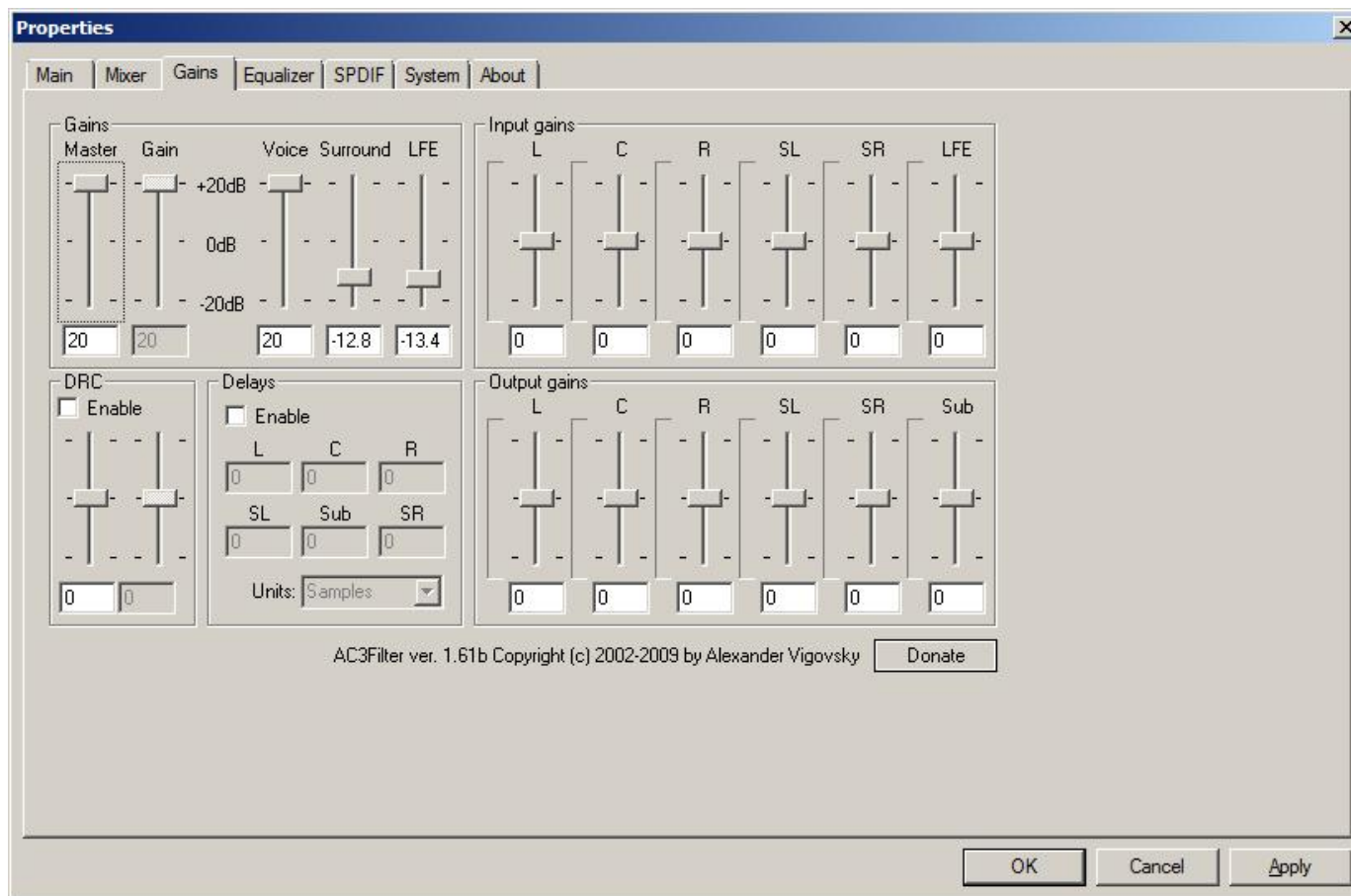
**Output levels**

Sub L C R SL SR

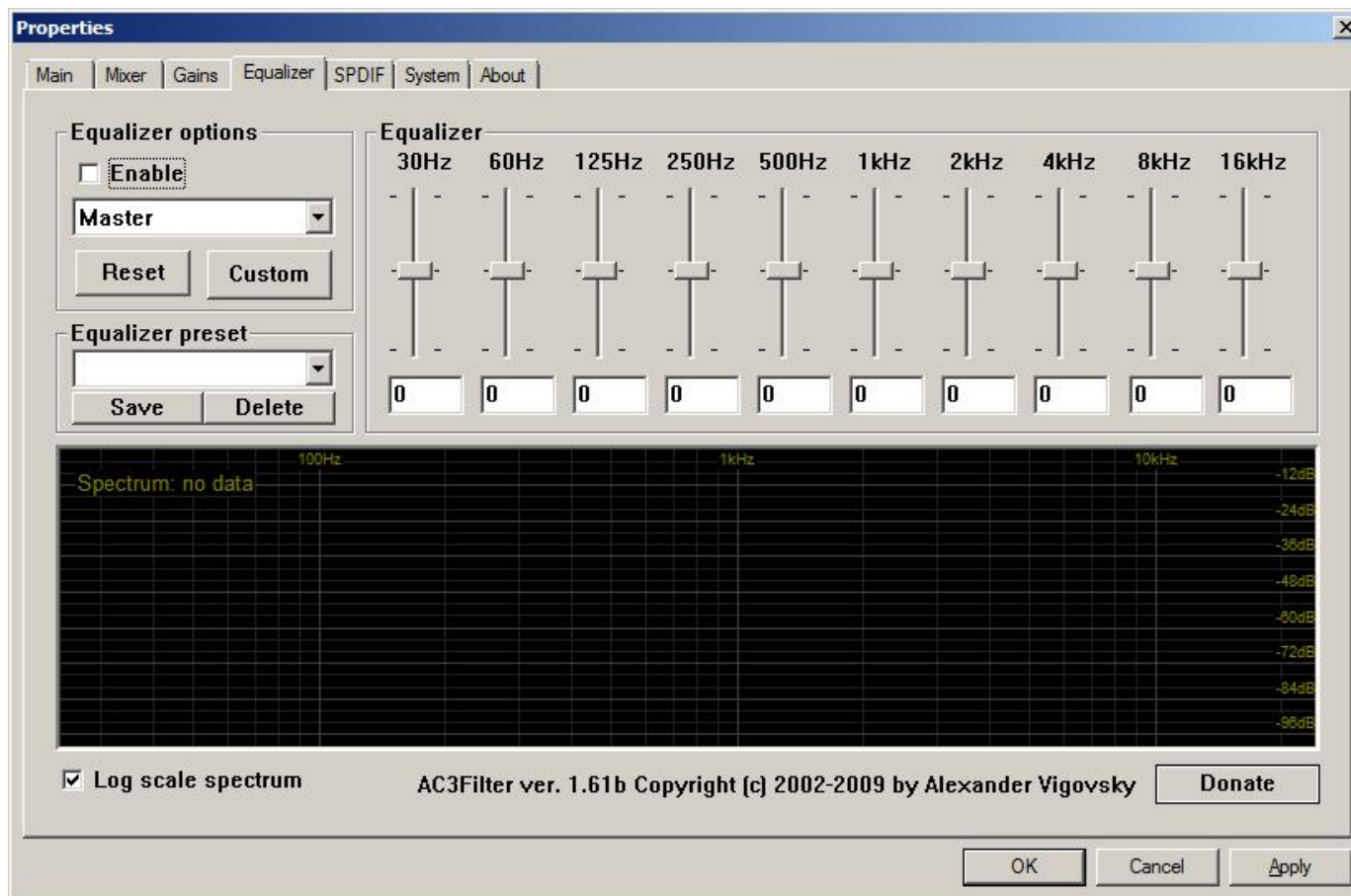
AC3Filter ver. 1.61b Copyright (c) 2002-2009 by Alexander Vigovsky [Donate](#)

OK Cancel Apply

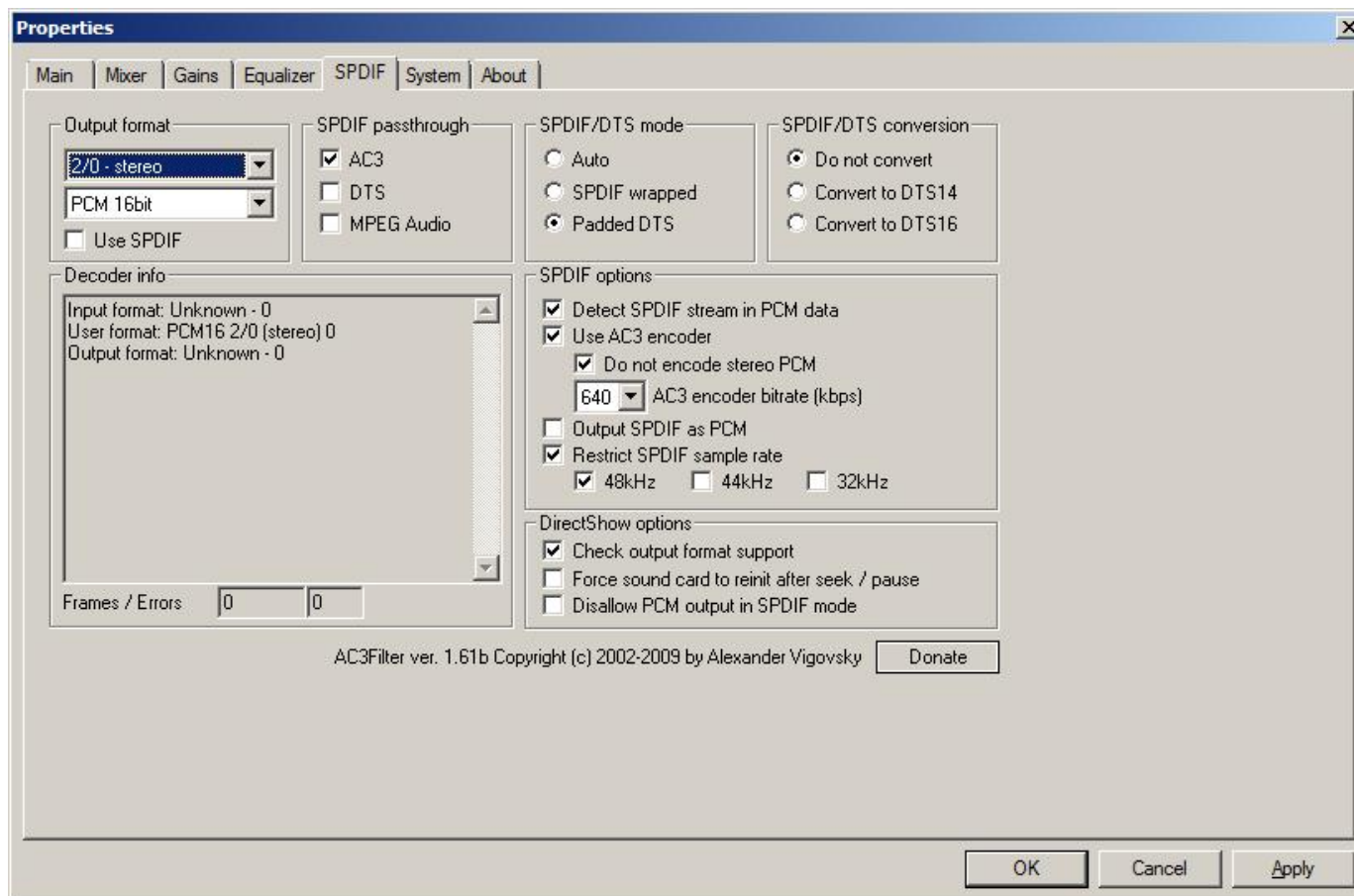
Gains (no change)



Equalizer (no change)



SPDIF (no change)



System (no change).

**Properties** [X]

Main Mixer Gains Equalizer SPDIF System About

Use AC3Filter for:  
☒ PCM  
☒ AC3  
☒ DTS  
☒ MPEG Audio  
☒ DVD  
☒ SPDIF

Filter merit  
☒ Prefer AC3Filter  
☐ Prefer other decoder

Localization  
Language:   
  
[How to translate?](#)

Default audio renderer  
☐ Use Direct Sound by default  
☐ Use Wave Out by default

Audio/Video sync  
Time shift (ms):  

<- sound lags 0 sound hastes ->

  
☒ Jitter correction. Current jitter:  
Input mean: 0ms stddev: 0ms  
Output mean: 0ms stddev: 0ms

AGC  
Attack/release speed (dB/s):

Interface options  
☒ Show tray icon  
☒ Show tooltips  
☐ Invert levels  
 Interface update rate (ms)

DirectShow options  
☒ Check output format support  
☐ Force sound card to reinit after seek / pause  
☐ Disallow PCM output in SPDIF mode

AC3Filter ver. 1.61b Copyright (c) 2002-2009 by Alexander Vigovsky