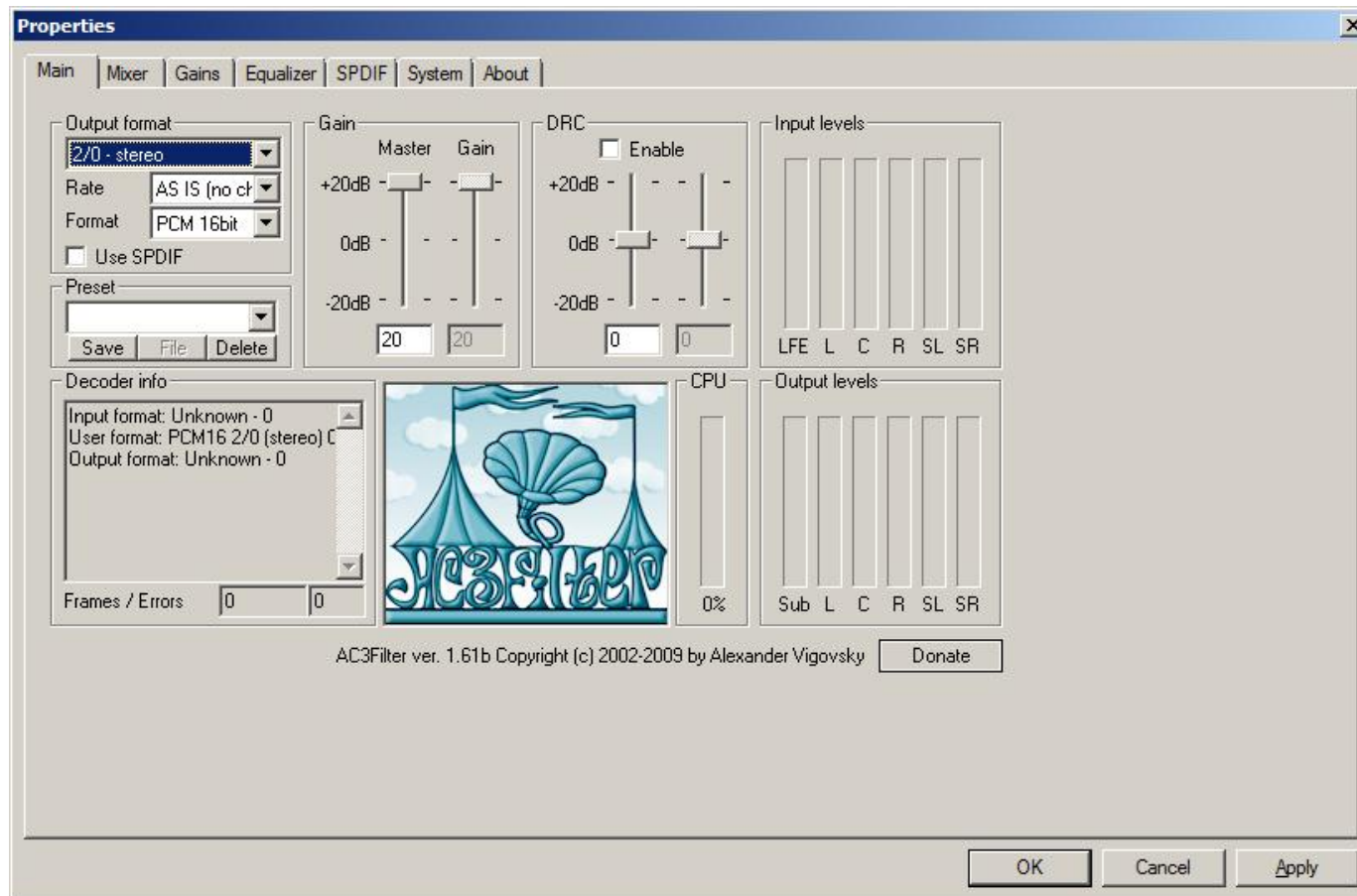


AC3Filter

The following settings work for me

Main (change Master and Gain)



Mixer (change Voice, Surround, LFE)

Properties

Main Mixer Gains Equalizer SPDIF System About

Gains

Master Gain Voice Surround LFE

20 20 +20dB 0dB -20dB 20 -12.8 -13.4

Output format

2/0 - stereo
PCM 16bit

Matrix preset

Save Delete

Options

☒ Auto gain control
☐ One-pass norm
☒ Auto matrix
☐ Normalize matrix
☒ Voice control
☒ Expand stereo
☐ Bass redirection
120 Cutoff frequency

Mixing matrix

| | L | C | R | SL | SR | LFE | |
|--------|---|--------|---|----|----|-----|-----|
| 0.6145 | 0 | 0.3855 | 0 | 0 | 0 | 0 | L' |
| 0 | 0 | 0 | 0 | 0 | 0 | 0 | C' |
| 0.3855 | 0 | 0.6145 | 0 | 0 | 0 | 0 | R' |
| 0 | 0 | 0 | 0 | 0 | 0 | 0 | SL' |
| 0 | 0 | 0 | 0 | 0 | 0 | 0 | SR' |
| 0 | 0 | 0 | 0 | 0 | 0 | 0 | Sub |

Input levels

LFE L C R SL SR

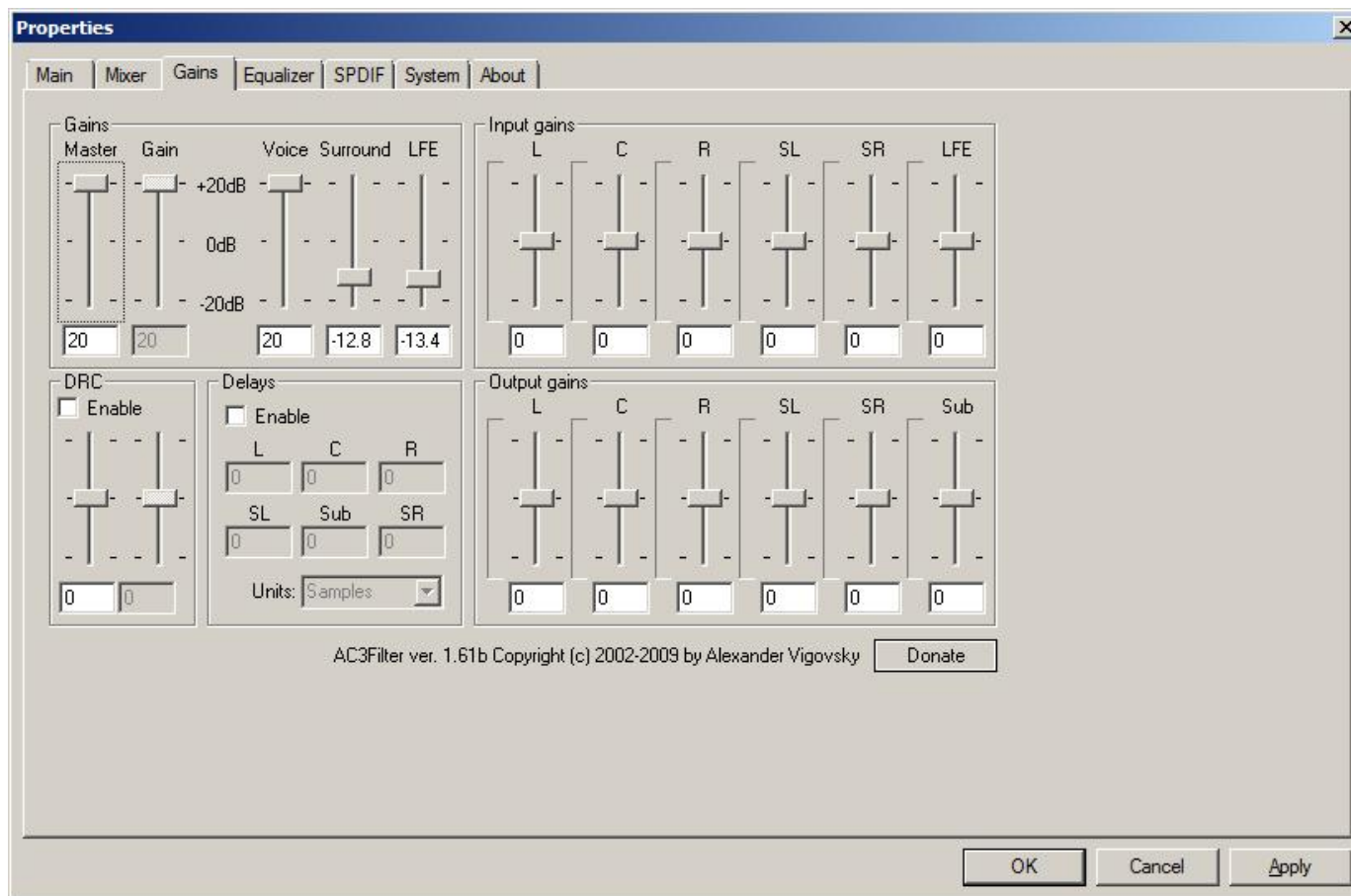
Output levels

Sub L C R SL SR

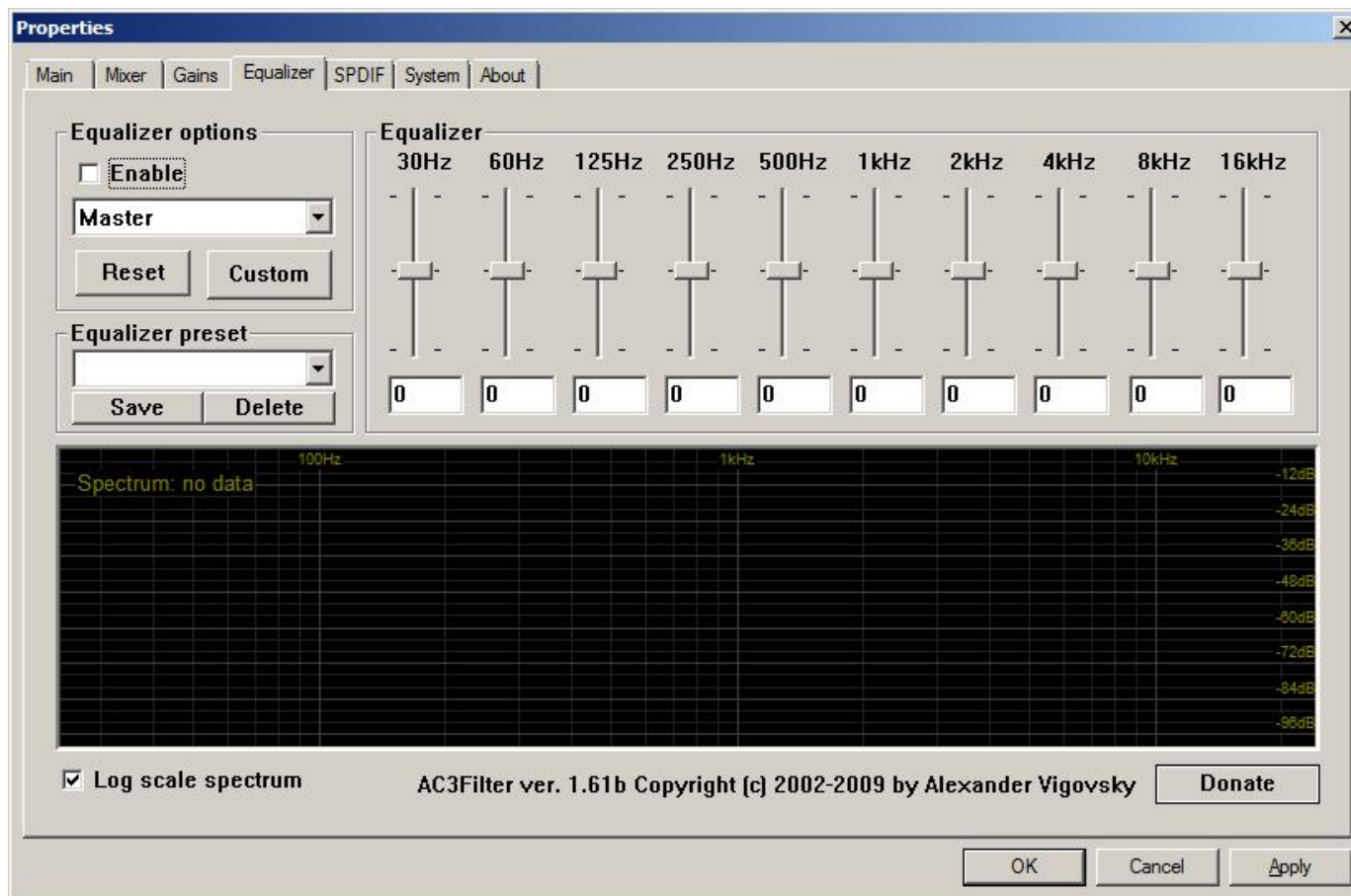
AC3Filter ver. 1.61b Copyright (c) 2002-2009 by Alexander Vigovsky [Donate](#)

OK Cancel Apply

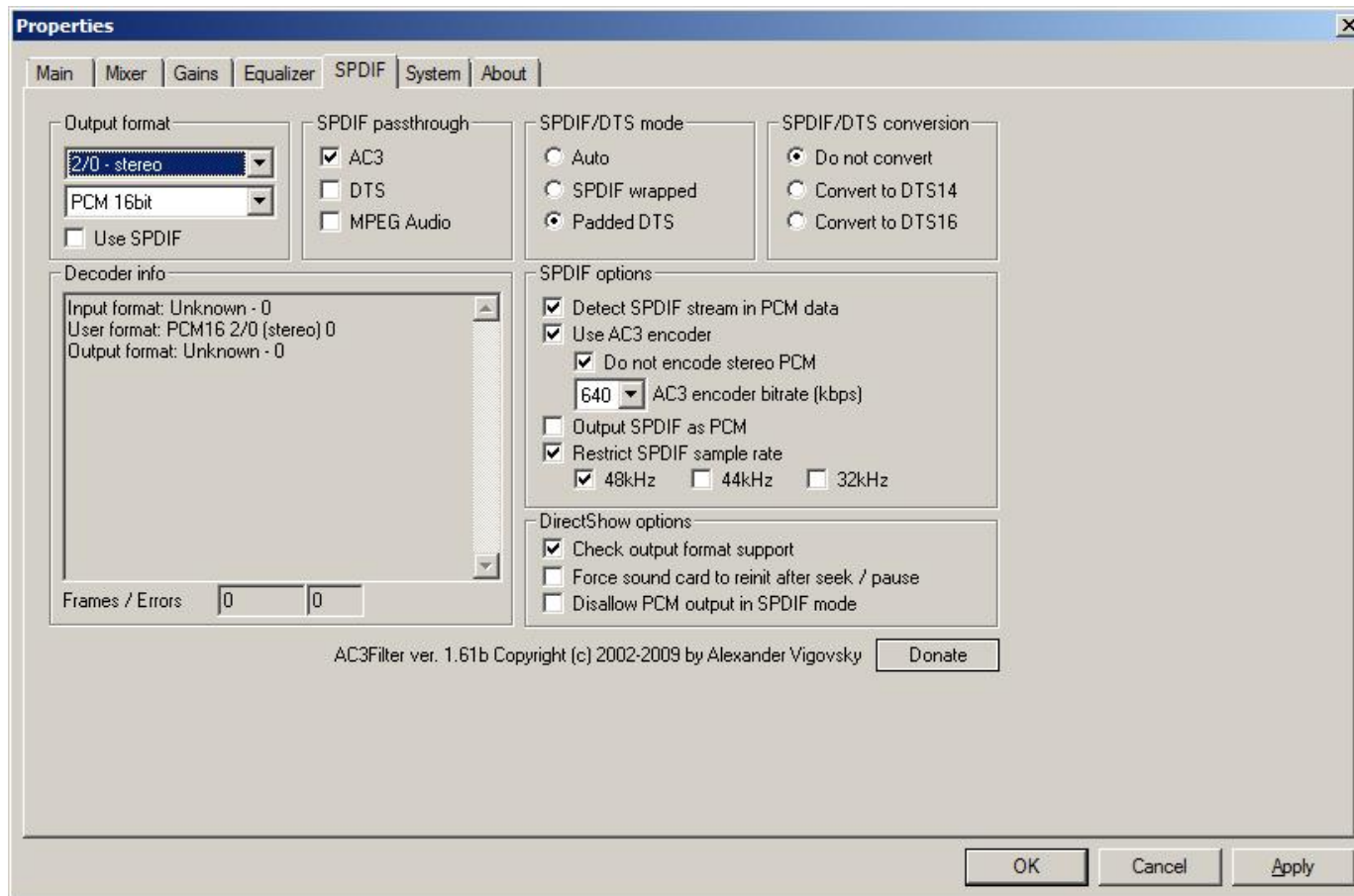
Gains (no change)



Equalizer (no change)



SPDIF (no change)



System (no change).

Properties



Main Mixer Gains Equalizer SPDIF System About

Use AC3Filter for:

- ☒ PCM
- ☒ AC3
- ☒ DTS
- ☒ MPEG Audio
- ☒ DVD
- ☒ SPDIF

Filter merit

- ☒ Prefer AC3Filter
- ☐ Prefer other decoder

Default audio renderer

- ☐ Use Direct Sound by default
- ☐ Use Wave Out by default

Localization

Language: --- Original ---

[How to translate?](#)

Audio/Video sync

Time shift (ms):

<- sound lags

0

sound hastes ->

☒ Jitter correction.

Current jitter:

Input mean: 0ms stddev: 0ms
Output mean: 0ms stddev: 0ms

AGC

Attack/release speed (dB/s): 100 50

Interface options

- ☒ Show tray icon
- ☒ Show tooltips
- ☐ Invert levels
- 50 Interface update rate (ms)

DirectShow options

- ☒ Check output format support
- ☐ Force sound card to reinit after seek / pause
- ☐ Disallow PCM output in SPDIF mode

AC3Filter ver. 1.61b Copyright (c) 2002-2009 by Alexander Vigovsky

[Donate](#)

OK

Cancel

Apply